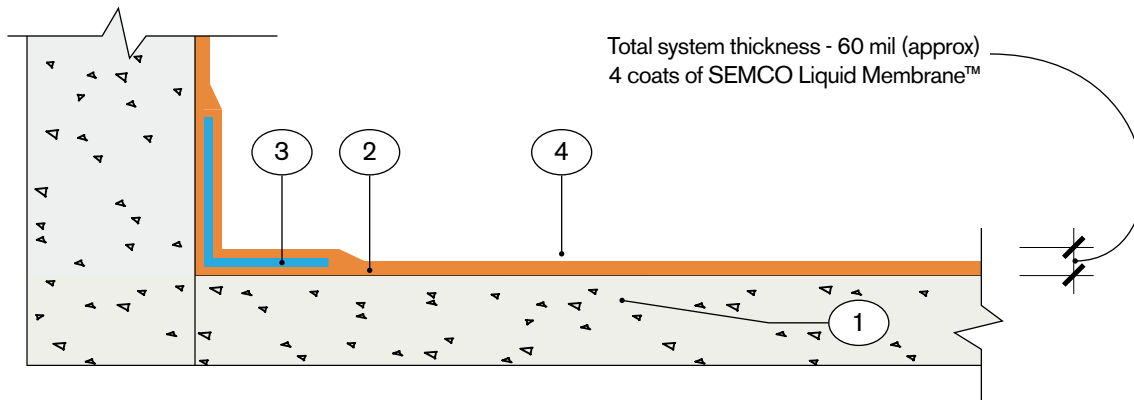
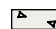



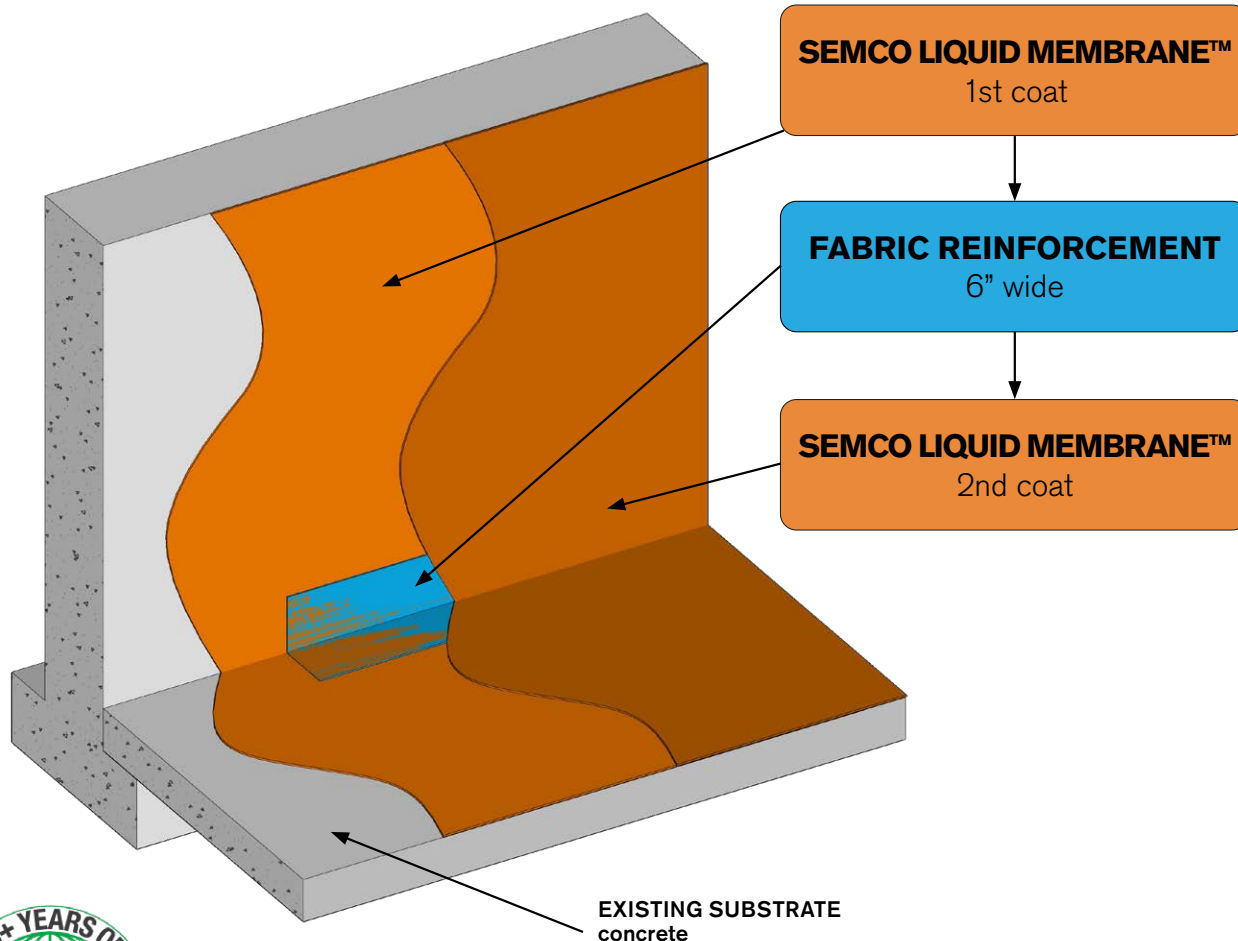


BASEMENT WATERPROOFING

Reduces RH up to 75% / vapor transmission rate up to 10 PSI



-  1. Existing substrate - concrete
-  2. SEMCO Liquid Membrane™ - 2 coats, each coat 15 mil. Total thickness - 30 mil (2 coats). Let each coat dry before applying next coat.
-  3. Fabric reinforcement
-  4. SEMCO Liquid Membrane™ - 2 coats, each coat 15 mil. Total thickness - 30 mil (2 coats). Let each coat dry before applying next coat.



FLOORS | WALLS | POOL DECKS | WATERPROOFING
 REDEFINING THE ART OF SURFACE CREATIVITY FOR OVER 25 YEARS USING GREEN MATERIALS

