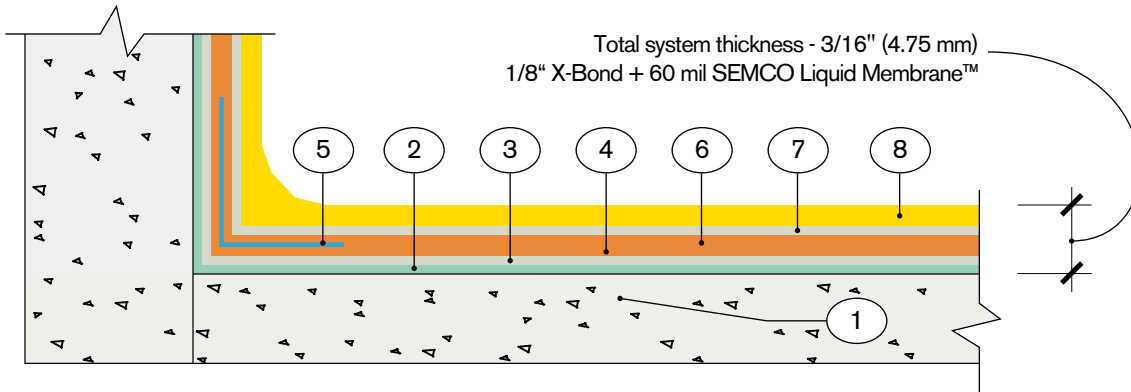


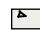







## BASEMENT WATERPROOFING

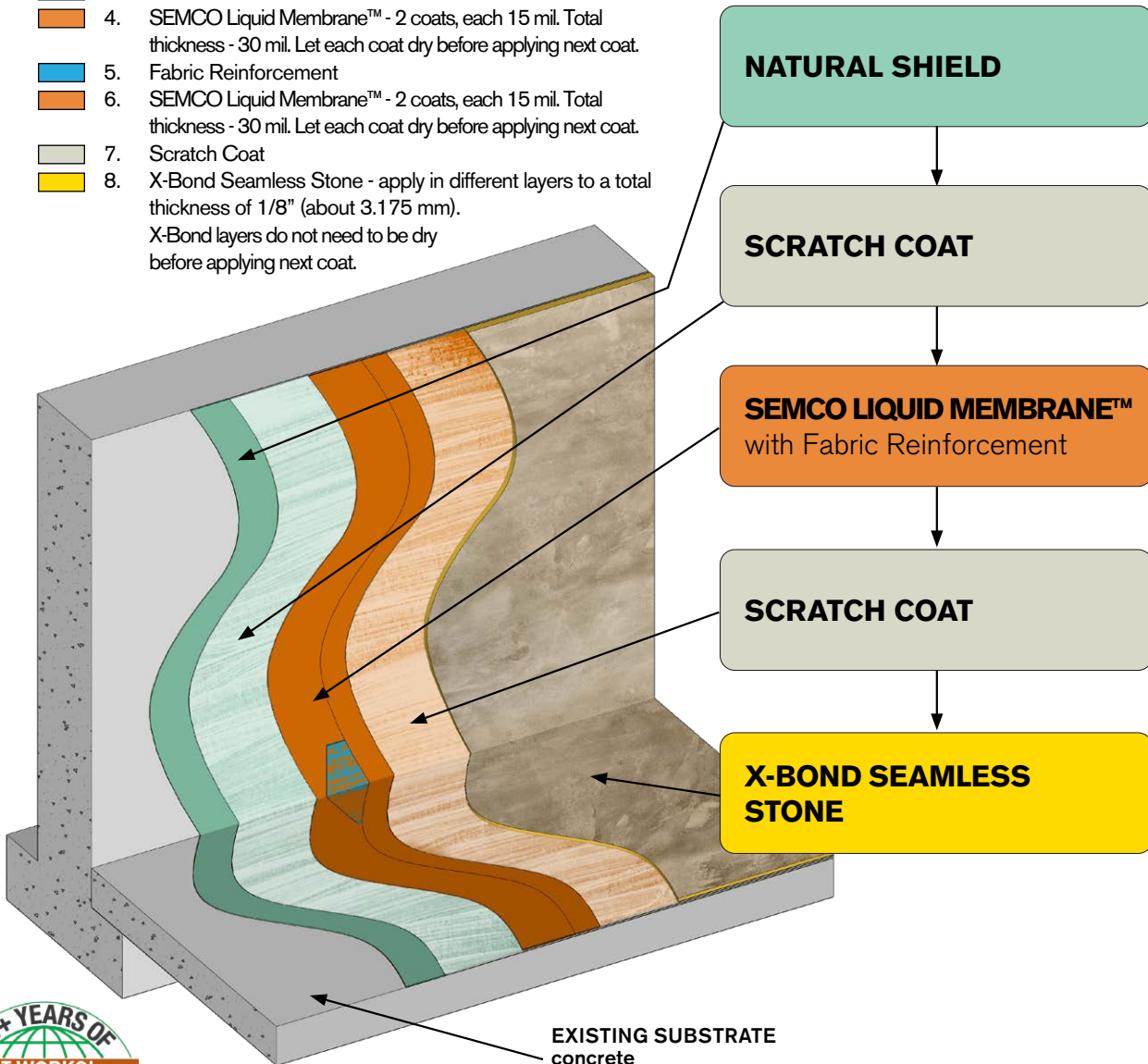
modern seamless surface

SURFACE ENGINEERING COMPANY

Reduces RH up to 90%, vapor transmission up to 20 PSI



-  1. Existing substrate - concrete
-  2. Natural Shield, 2 coats
-  3. Scratch Coat
-  4. SEMCO Liquid Membrane™ - 2 coats, each 15 mil. Total thickness - 30 mil. Let each coat dry before applying next coat.
-  5. Fabric Reinforcement
-  6. SEMCO Liquid Membrane™ - 2 coats, each 15 mil. Total thickness - 30 mil. Let each coat dry before applying next coat.
-  7. Scratch Coat
-  8. X-Bond Seamless Stone - apply in different layers to a total thickness of 1/8" (about 3.175 mm). X-Bond layers do not need to be dry before applying next coat.



**NATURAL SHIELD**

**SCRATCH COAT**

**SEMCO LIQUID MEMBRANE™**  
with Fabric Reinforcement

**SCRATCH COAT**

**X-BOND SEAMLESS STONE**

**EXISTING SUBSTRATE**  
concrete



**FLOORS | WALLS | POOL DECKS | WATERPROOFING**  
REDEFINING THE ART OF SURFACE CREATIVITY FOR OVER 25 YEARS USING GREEN MATERIALS

